



**Expo**

Exposition Metro Line  
Construction Authority

707 Wilshire Boulevard  
34th Floor  
Los Angeles, CA 90017

213.243.5500  
BuildExpo.org

**7.a**

**DATE: SEPTEMBER 3, 2015**

**TO: BOARD OF DIRECTORS**

**FROM: RICHARD D. THORPE** *RDT*  
**CHIEF EXECUTIVE OFFICER**

**ACTION: RECEIVE AND FILE THE MONTHLY PHASE 1 AND PHASE 2  
PROJECT STATUS UPDATE AND THE LOCAL JOBS AND SBE  
PROGRAM UPDATE FOR PHASE 2 OF THE PROJECT**

---

**RECOMMENDATION**

Receive and File the Monthly Phase 1 and Phase 2 Project Status Update and receive an update on the Local Jobs and SBE Program for Phase 2 of the Project.

**SUMMARY**

The presentation will summarize key project activities completed during the previous month, and key activities planned for next month for both Phase 1 and Phase 2 of the Project.

Staff will also provide an update on the Contractor Local Jobs and SBE Program for Phase 2 of the Project.

**FINANCIAL IMPACT**

None

**ATTACHMENT(S)**

None



# Expo Light Rail Line



## Expo Phase 1

## **Closeout Status**

- **Completing Closeout of Remaining Elements of Work**
  - Outstanding City of LA work elements completed
  - Final As-Builts submitted
  - Working with Metro and City of LA on final project closeout
- **Ridership**
  - Expo Line ridership for July 2015: 30,685 weekday riders

# Expo Light Rail Line





## Phase 2 Expo Light Rail Line

## Construction Activities





**Bike Path Paving on Olympic Boulevard**





**Progress at the Operations and Maintenance Facility**







## Phase 2 Expo Light Rail Line

## Construction Activities



**Paver Installation at the Downtown Santa Monica Station**

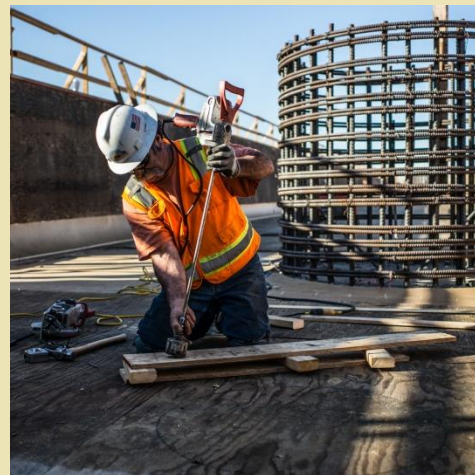
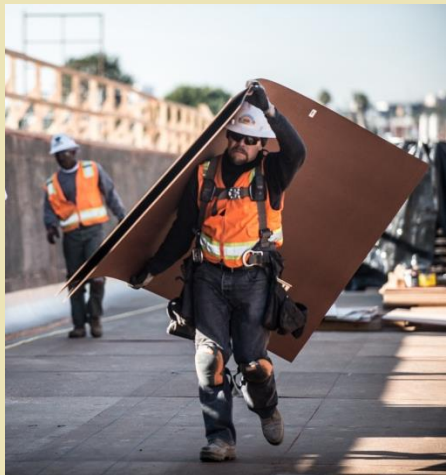


**Train Testing at the Downtown Santa Monica Station**



### Alignment Design-Build Contract

- Construction Highlights
  - Overhead Catenary System installation is complete
  - Signal crossing equipment installation and commissioning is ongoing at all grade crossings
  - Train testing is ongoing throughout the alignment
  - Continued work on station canopies, railing, lighting and signage
  - Roadway improvements are ongoing, and final inspections have started in Segment 1
  - Landscape irrigation and planting installation are underway



### Operations and Maintenance Facility

- Continued construction of main and secondary buildings
- Traction power substation commissioning is complete
- Track installation is complete
- Overhead Catenary System installation is near completion
- Paving of access roads and parking lot is ongoing



### Bikeway Contract

- Paving, irrigation and lighting systems work continues

### Completion Issues

- Centinela MSE wall settlement grouting underway
- Working with both contractors for a project turnover to Metro by the end of October or early November.
- Still working towards a Revenue Operations target date of March 2016

### Community Outreach

- Conducted targeted outreach along the alignment as necessary for ongoing street improvements
- Worked with Metro to facilitate a press event at Palms Station for state legislators regarding transit funding





## Commitment through April 2015

- SRJV and its subcontractors have employed **302** small businesses, **214** of which are local
- Over **\$144 million** has been committed to SBE's
  - Over **\$77 million** has been committed to Local SBE's
- Bonds have been waived for **46** SBE's
- Insurance requirements have been relaxed for **40** SBE's

# Phase 2 Expo Light Rail Line

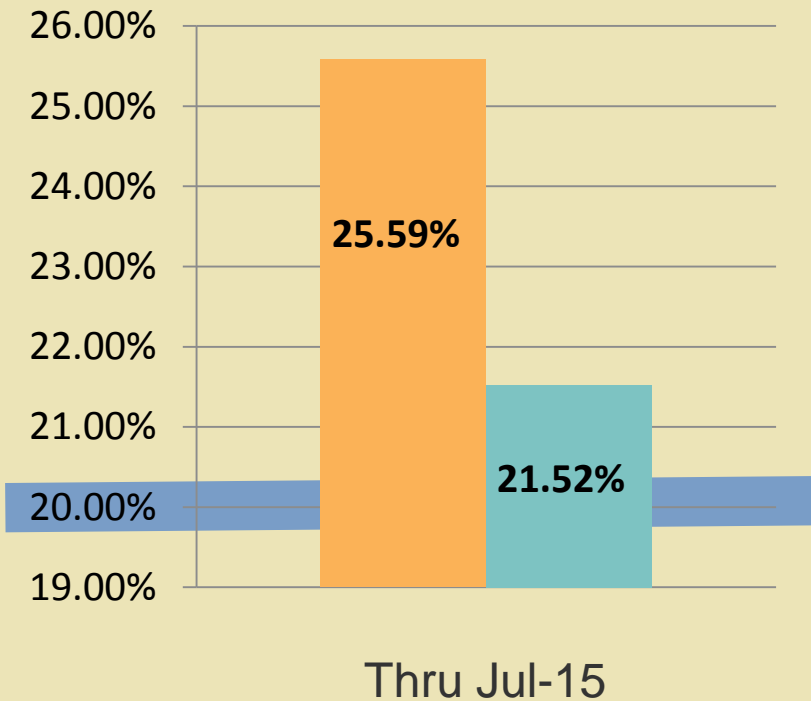
## L/SBE Goals and Signed Contracts

SBE Report through July 31, 2015\*

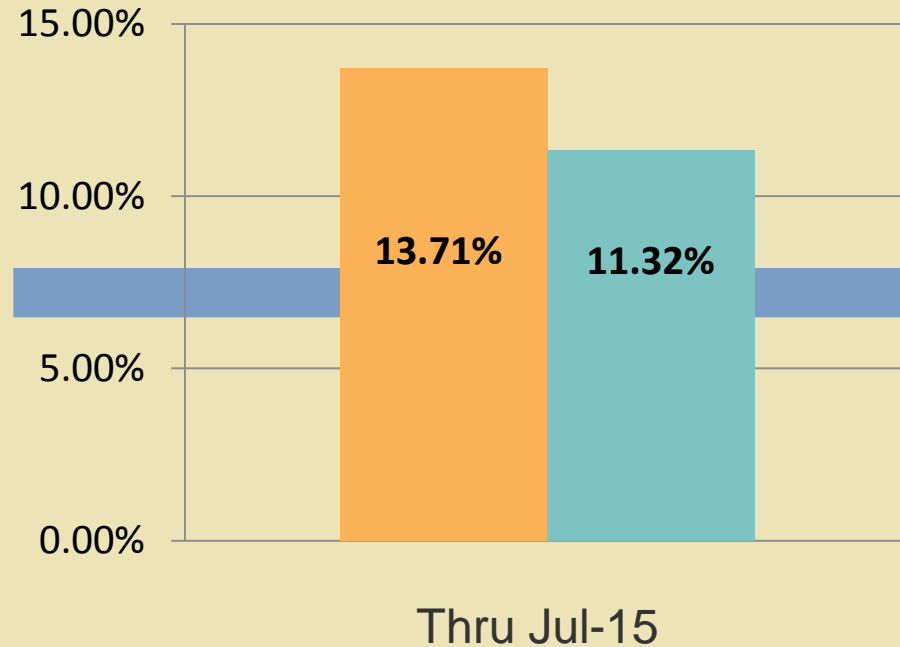
Project Completion: 94.2%

**SBE GOAL = 20%**

Committed  
Attainment



**LOCAL SBE GOAL = 7%**



# Phase 2 Expo Light Rail Line

## L/SBE Goals and Signed Contracts

Total Project Craft Hours To Date	1,848,184.04
Total Forecast Project Craft Hours	1,990,000.00
Total Craft Hours Percent	92.9%
<b>PROJECT COMPLETION:</b>	<b>94.2%</b>

	Craft Hours June 1, 2011 - July 25, 2015	Percentage (%) Craft Hours June 1, 2011 - July 25, 2015	Craft Hours July 26, 2015 - August 22, 2015	Percentage (%) July 26, 2015 - August 22, 2015	Cumulative Craft Hours To Date	Percentage (%) Cumulative Craft Hours To Date
<b>LOCAL HIRING BREAKDOWN</b>						
Community Area Hours	320,947.8	17.4%	573.0	22.0%	321,520.8	17.4%
Local Area Hours	579,150.3	31.4%	1,167.5	44.8%	580,317.8	31.4%
<b>Local Worker Hours Subtotal</b>	<b>900,098.1</b>	<b>48.8%</b>	<b>1,740.5</b>	<b>66.8%</b>	<b>901,838.6</b>	<b>48.8%</b>
Non-Local Hours	945,479.4	51.2%	866.0	33.2%	946,345.4	51.2%
<b>Total</b>	<b>1,845,577.5</b>		<b>2,606.5</b>		<b>1,848,184.0</b>	
<b>DISADVANTAGED LOCAL</b>						
	461,590.3	25.0%	965.5	37.0%	462,555.8	25.0%
<b>RACE/ETHNICITY BREAKDOWN</b>						
African-American	158,176.0	8.6%	180.0	6.9%	158,356.0	8.6%
Asian/Pacific Islander	47,212.6	2.6%	0.0	0.0%	47,212.6	2.6%
Caucasian	426,337.8	23.1%	508.0	19.5%	426,845.8	23.1%
Hispanic	1,117,686.3	60.6%	1,918.5	73.6%	1,119,604.8	60.6%
Native American	31,371.0	1.7%	0.0	0.0%	31,371.0	1.7%
Other	21,808.1	1.2%	0.0	0.0%	21,808.1	1.2%
Declined to Respond	42,985.8	2.3%	0.0	0.0%	42,985.8	2.3%
<b>Total</b>	<b>1,845,577.5</b>		<b>2,606.5</b>		<b>1,848,184.0</b>	
<b>GENDER BREAKDOWN</b>						
Female	38,713.6	2.1%	149.5	5.7%	38,863.1	2.1%
Male	1,806,864.0	97.9%	2,457.0	94.3%	1,809,321.0	97.9%
<b>Total</b>	<b>1,845,577.5</b>		<b>2,606.5</b>		<b>1,848,184.0</b>	
<b>CRAFT LEVEL BREAKDOWN**</b>						
Journeyman	1,109,874.2	83.5%	1,658.0	83.1%	1,111,532.2	83.5%
Apprentices	219,220.3	16.5%	336.0	16.9%	219,556.3	16.5%
<b>Total</b>	<b>1,329,094.4</b>		<b>1,994.0</b>		<b>1,331,088.4</b>	

\* Hours are included in Local Hire Hours.

\*\* Does not include Operating Engineers. (requirement is 1 Apprentice:5 Journeyman based on workers)