

Bicycle and Pedestrian Action Plans Update-2023

Kyle Kozar
Pr. Transportation Planner
Mobility Division
kyle.kozar@santamonica.gov



PRESENTATION OVERVIEW

1. BACKGROUND AND CONTEXT

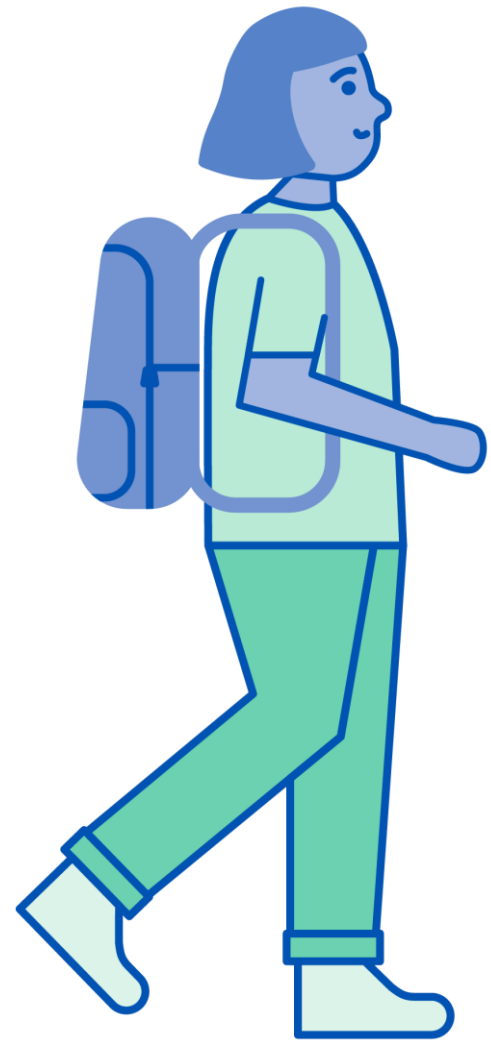
- Unpacking the Challenge
- Plans Overview
- Ridership and Crash Trends

2. PLANS AND PROJECT STATUS

- Implementation Process
- Projects Progress
- Recently Completed Projects/ In Construction
- City-wide Projects Underway

3. NEXT STEPS





BACKGROUND AND CONTEXT



UNPACKING THE CHALLENGE OF SAFE AND SUSTAINABLE URBAN MOVEMENT



Environmental Impact

64% of Santa Monica's
Carbon Emissions come
from vehicle trips



Northbound PCH at the California Incline

UNPACKING THE CHALLENGE OF SAFE AND SUSTAINABLE URBAN MOVEMENT



Safety Concerns

A striking **65%** of collisions resulting in fatalities or severe injuries (FSI) involve pedestrians, cyclists, or scooter riders



16th St. crosswalk at Wilshire Blvd.

UNPACKING THE CHALLENGE OF SAFE AND SUSTAINABLE URBAN MOVEMENT



Infrastructure to meet the demands of growing city

New development and changing land uses can have immense impacts on the roadway and require close coordination with the City to minimize conflict and meet all users' needs.



Delivery truck blocking turn lane on Franklin St.

UNPACKING THE CHALLENGE OF SAFE AND SUSTAINABLE URBAN MOVEMENT



Innovations and Roadway Etiquette

New mobility enhancements require proactive efforts to acquaint citizens with the proper protocols and laws, preventing confusion and ensuring safety.



Protected Intersection at 17th St. and Broadway

ENVISIONING A BETTER TOMORROW

Our dual commitment to **Vision Zero & Zero Emissions** sets the foundation for bright, safe future in Santa Monica.

SANTA MONICA MOBILITY GOALS:



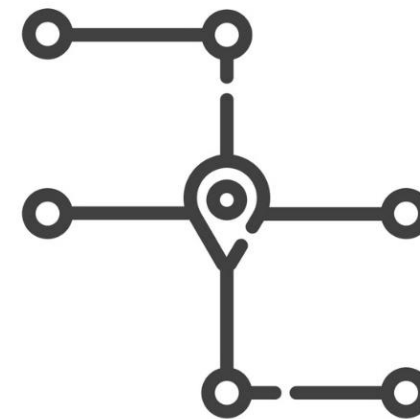
Sustainable Trips:

Reduce emissions by converting 50% of local journeys to walking, biking, scootering, skateboarding, and transit.

VISION ZERO

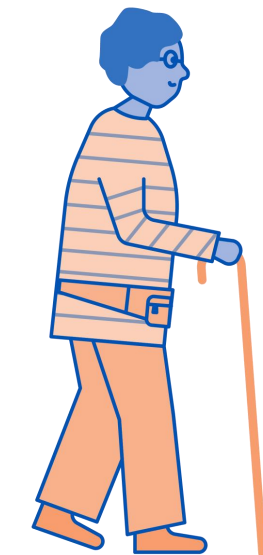
Zero FSI Crashes by

2026: Completely eliminate fatal and severe injury crashes.



Unified Network:

Build a complete, high-quality network of multi-modal options to boost equitable access to opportunity for all.



All-inclusive Design:

Ensure facilities are accessible to every user, of all ages and abilities, through thoughtful design and public education.

PEDESTRIAN ACTION PLAN (PAP) - 2016



Citywide Projects

City of Santa Monica
Pedestrian Action Plan

Project Priority

- Five Year
- Ten Year
- Fifteen Year

Project Type

- Corridor
- Intersection
- School area Improvement
- M Metro Station

Note:

Extents of lighting, wayfinding, curb ramp, bike corral, signal modification, lead pedestrian interval and school projects are not mapped.



Data obtained from the City of Santa Monica
Map created September, 2015



WILSHIRE SAFETY STUDY - 2020

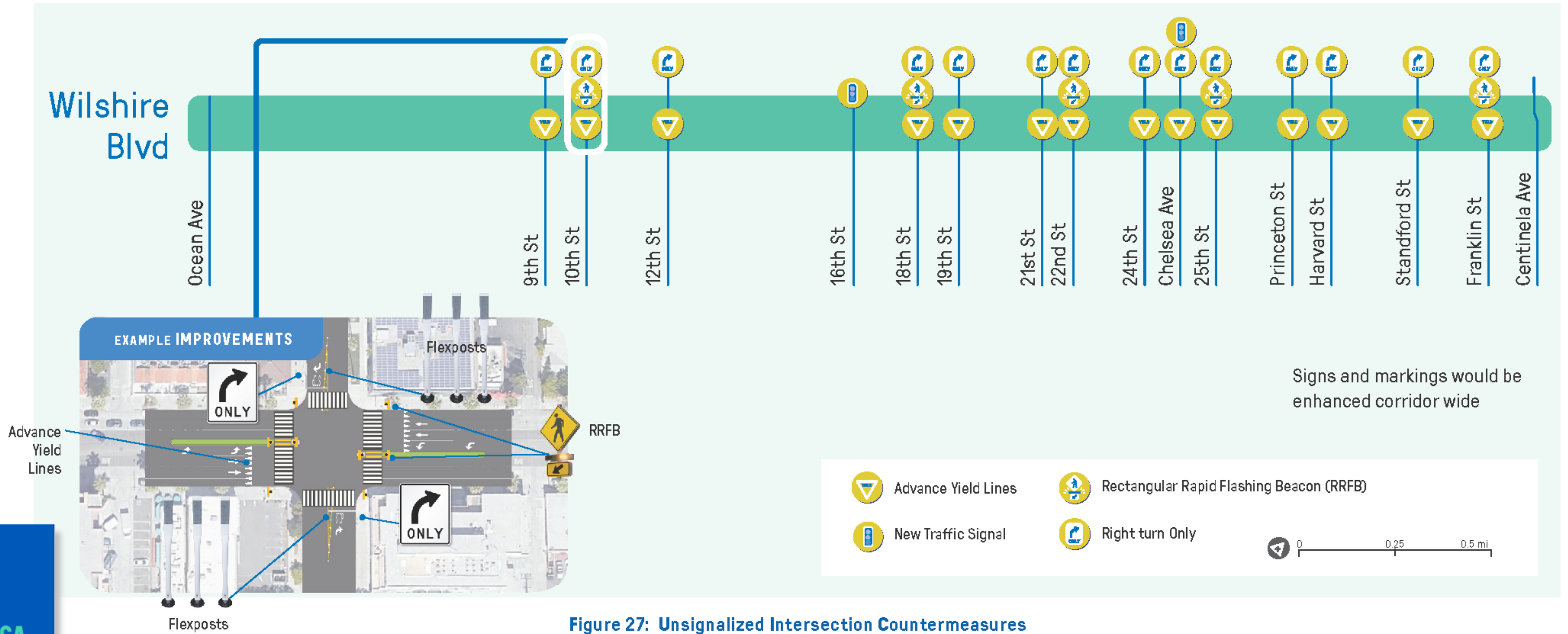
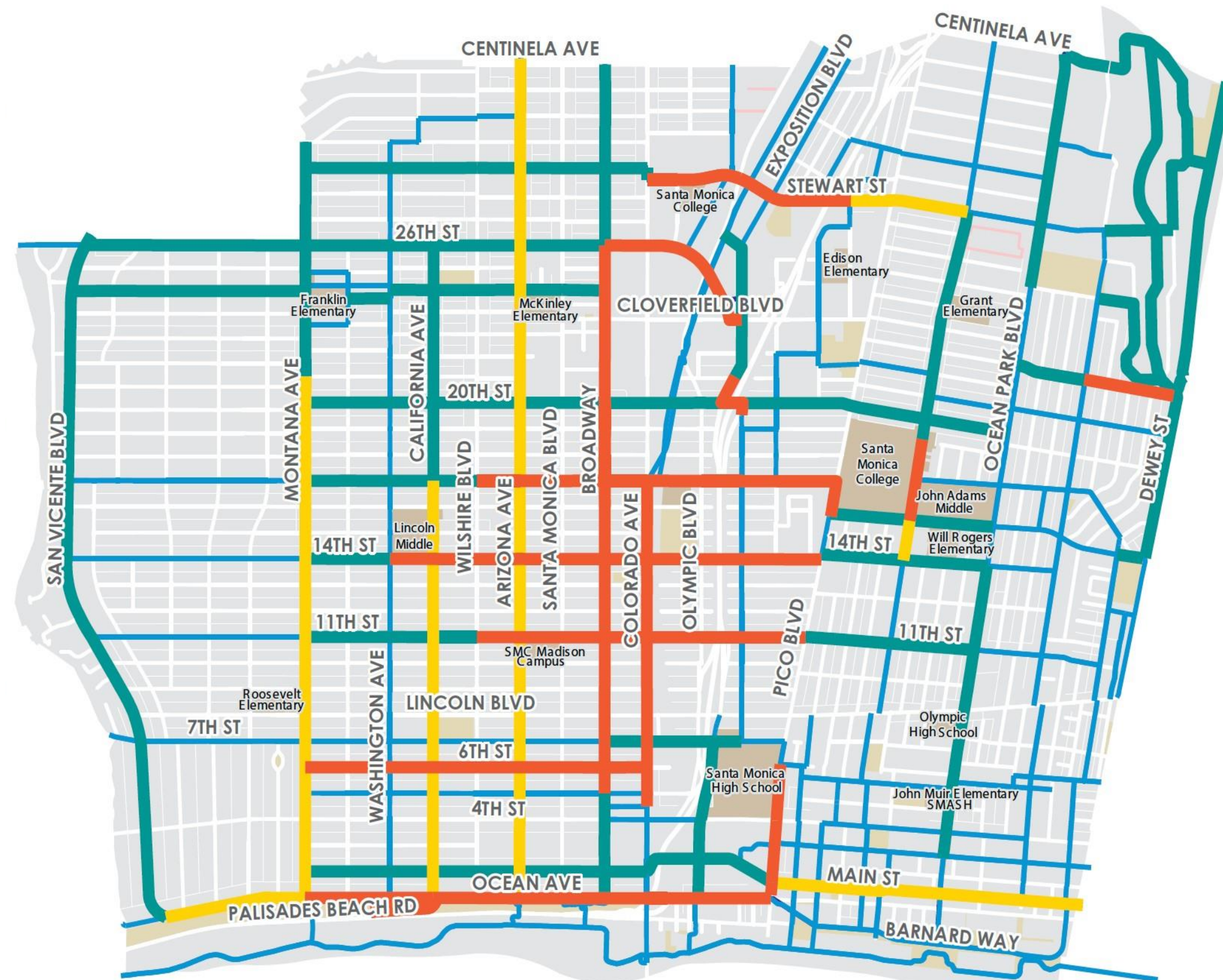


Figure 27: Unsignalized Intersection Countermeasures



BICYCLE ACTION PLAN AMENDMENT (BAPA) - 2020



Santa Monica Protected Bikeway Vision

Protected Bikeways

Five-Year Vision

Longer-Term Vision

Priority Connections

Future Priority Connection

Existing & Planned Bike Network

Existing or Planned Bike Facility

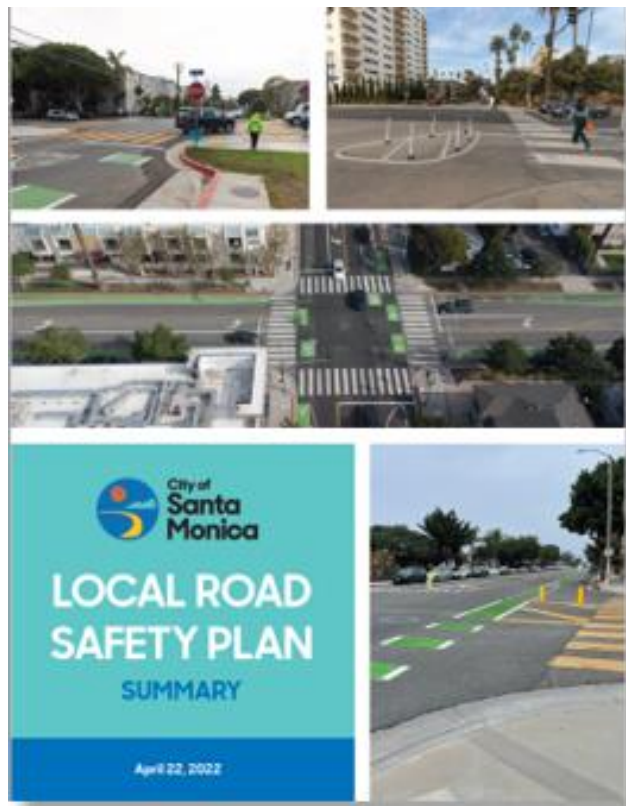
Notes: The Colorado Avenue protected bikeway is westbound only.



Data obtained from the City of Santa Monica Map created June, 2020



LOCAL ROADWAY SAFETY PLAN (LRSP) - 2022



The Pacific Coast Highway is under Caltrans' jurisdiction

Priority Network, 2015-2019

 Priority Network:
Top 50% of Weighted Crashes

Crashes are weighted by severity as follows:
 Fatal or severe: 22
 Other visible injury: 2
 Complaint of pain: 1



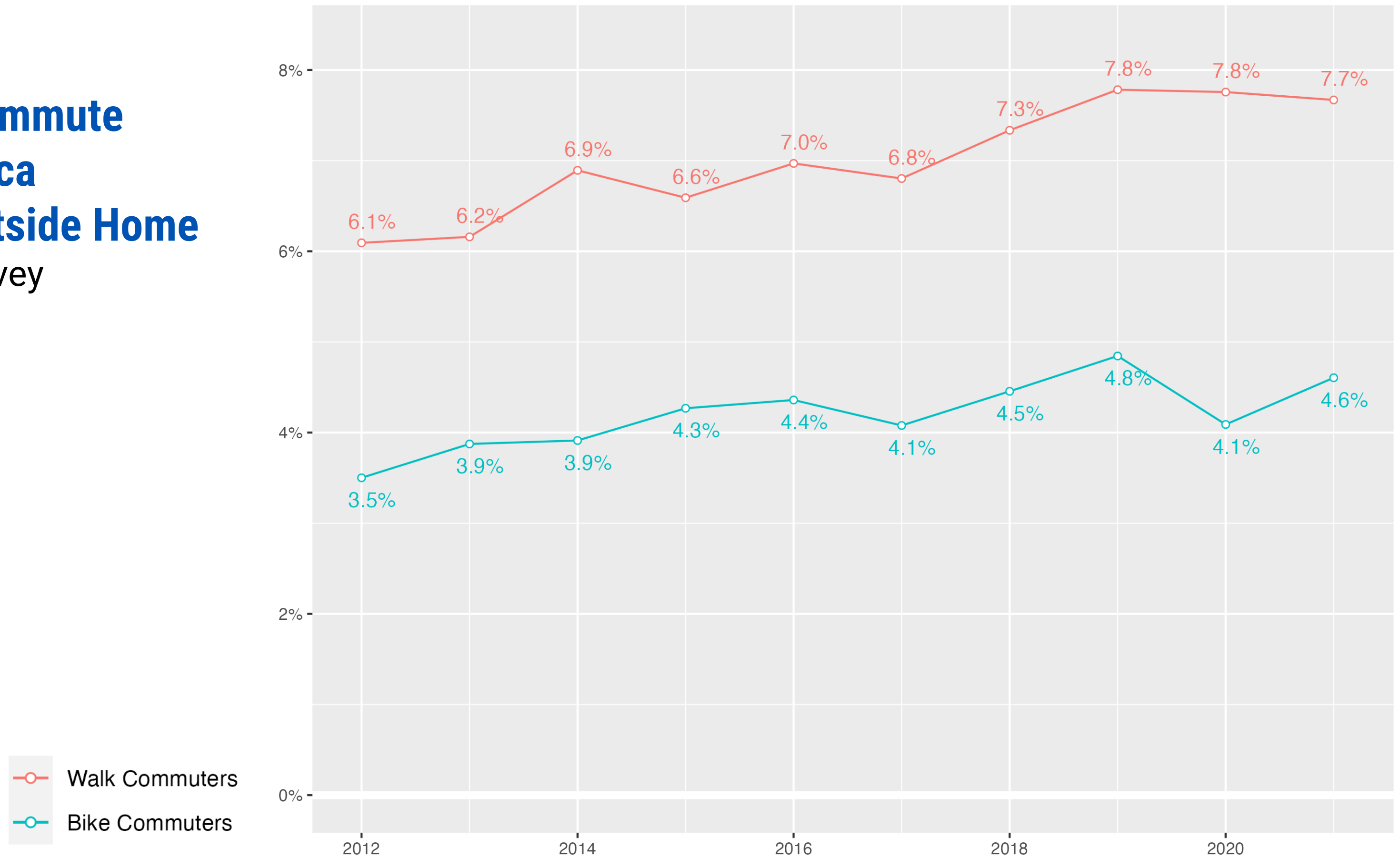
Data sources: Transportation Injury Mapping System, Safe Transportation Research and Education Center, University of California, Berkeley; City of Santa Monica
 Map created June, 2021

PEDESTRIAN AND CYCLIST COMMUTE TRENDS

Walking and Biking Commute Shares for Santa Monica Residents Working Outside Home

American Community Survey
5-Year Averages

Source: American Community Survey

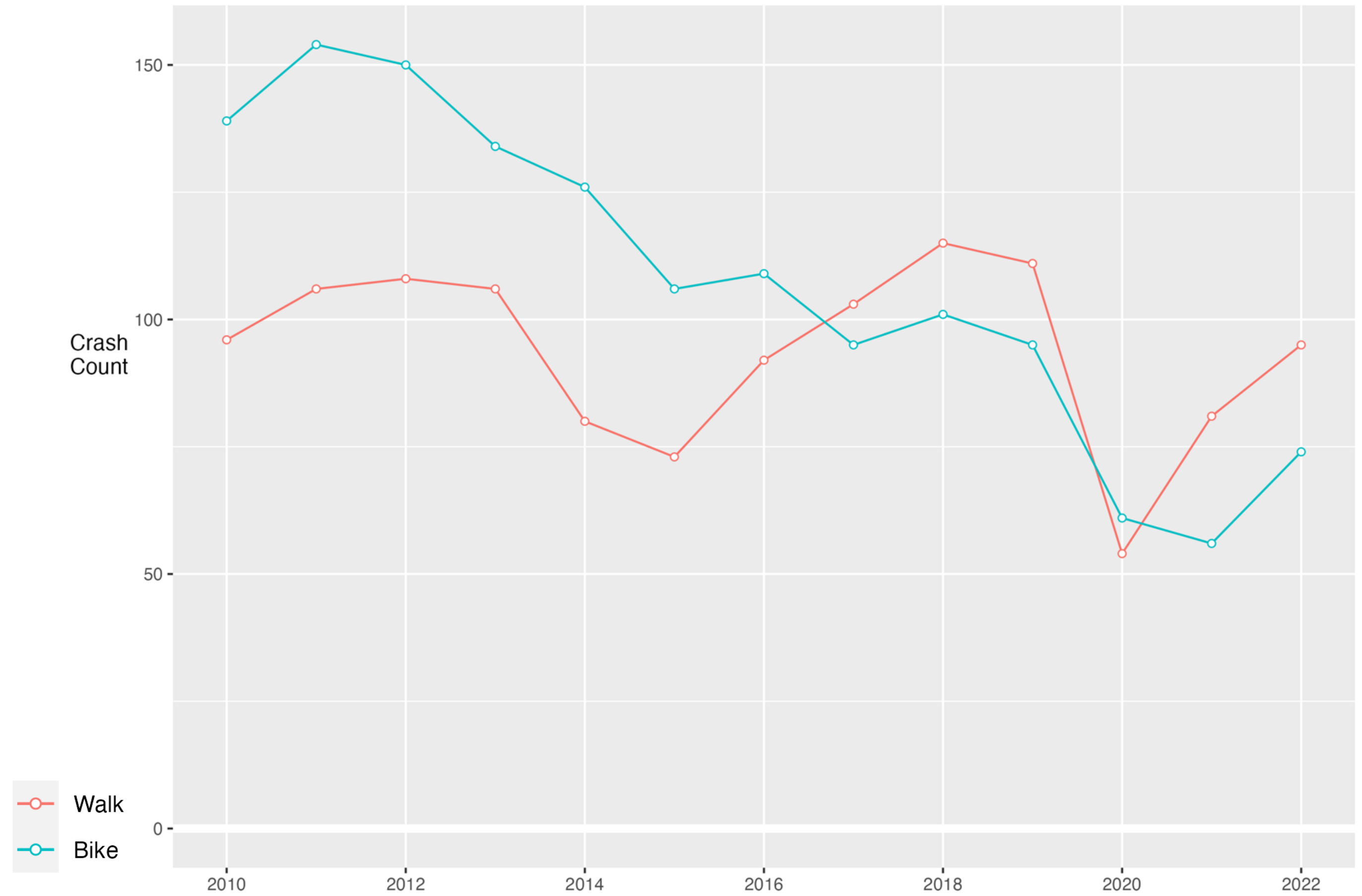


PEDESTRIAN AND CYCLIST CRASH TRENDS

Crashes in Santa Monica, By Mode by Year

All Injury-Causing Crashes

Source: City of Santa Monica

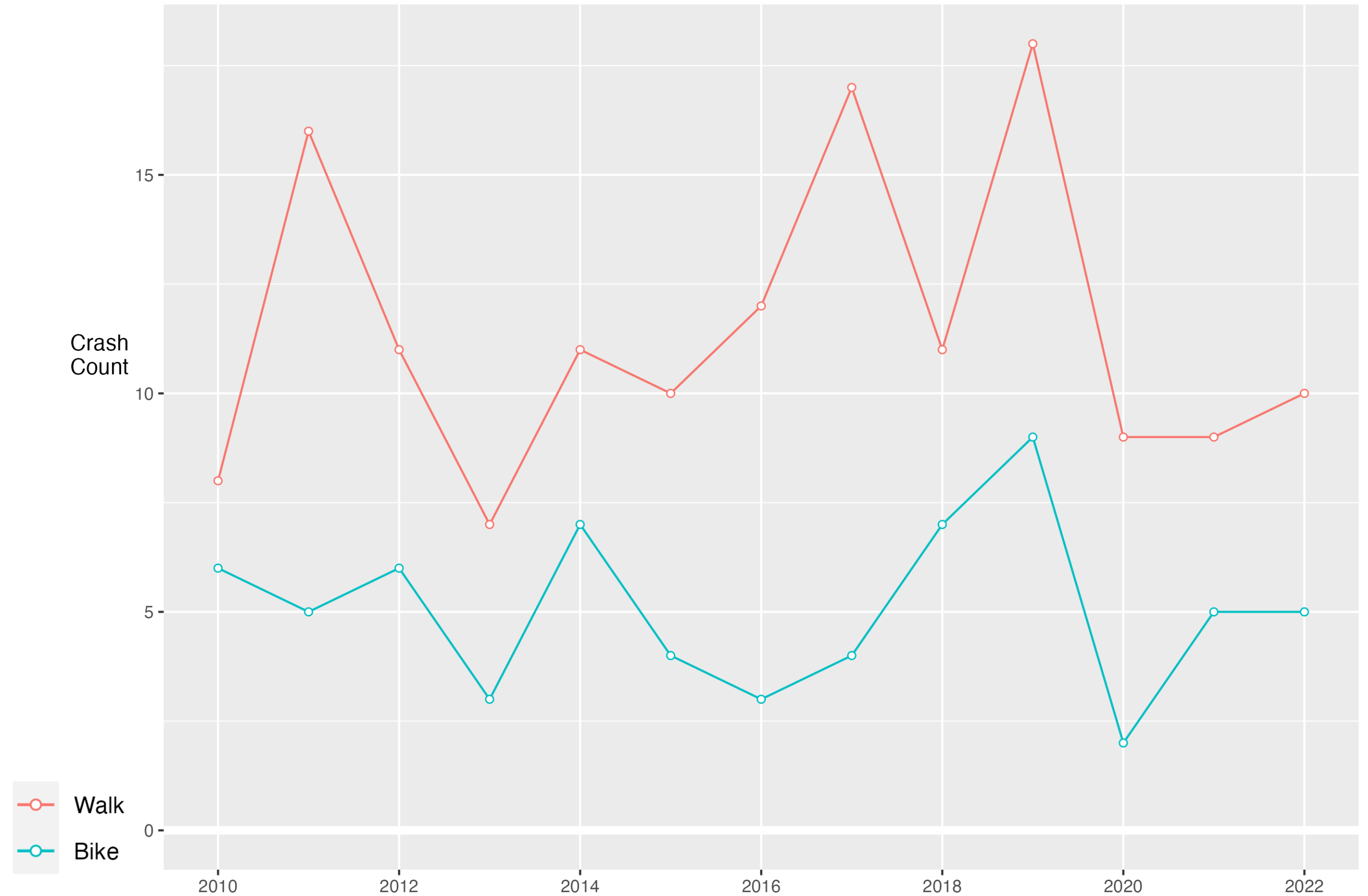


PEDESTRIAN AND CYCLIST CRASH TRENDS

Crashes in Santa Monica, By Mode by Year

Fatal and Severe Injury Crashes

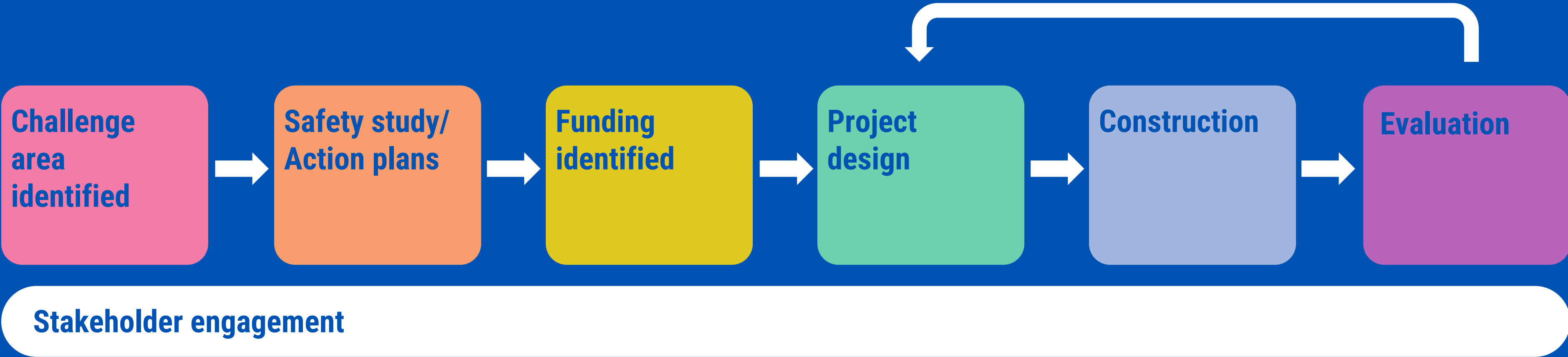
Source: City of Santa Monica



Plans and Project Status

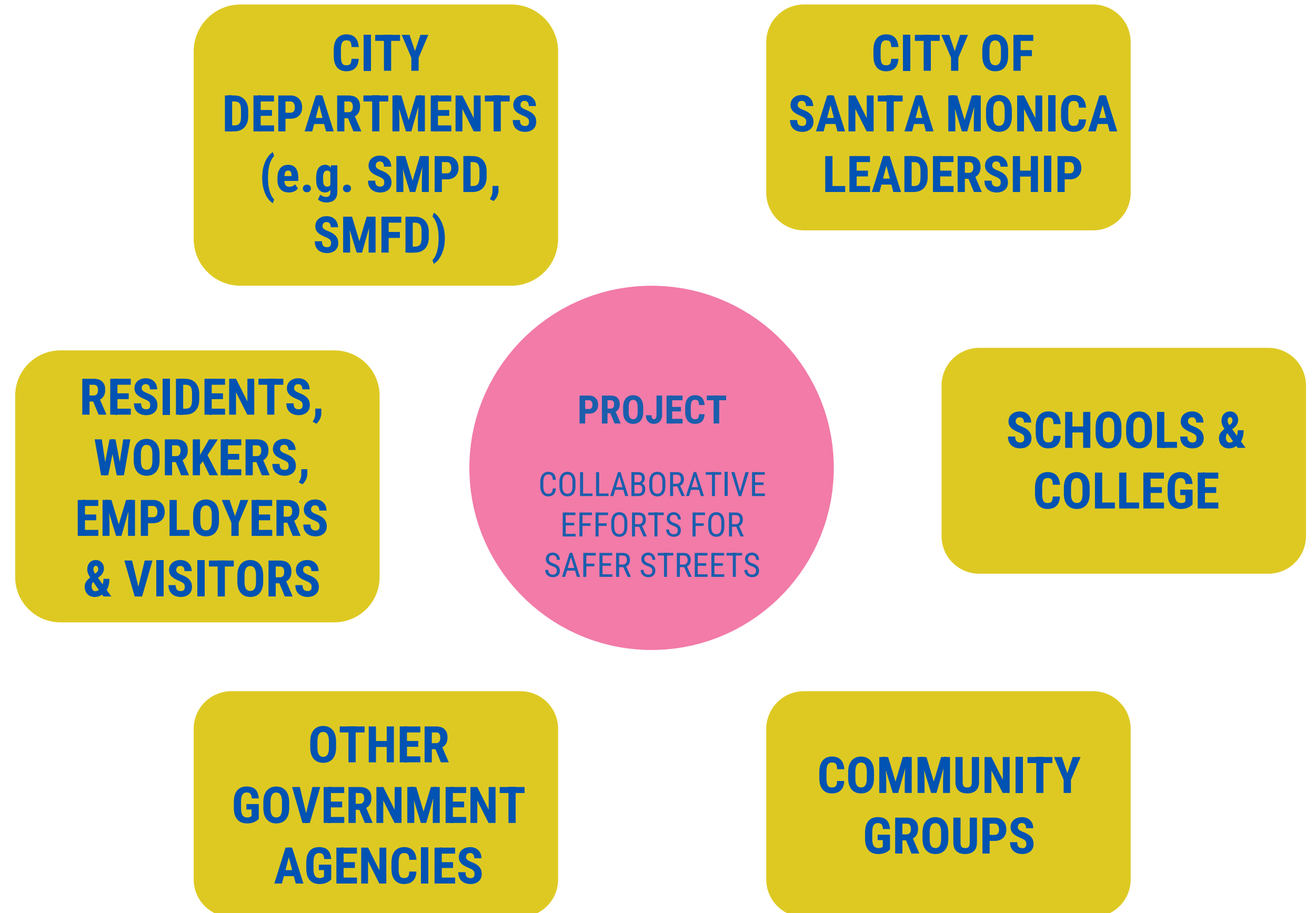


PROJECT IMPLEMENTATION PROCESS

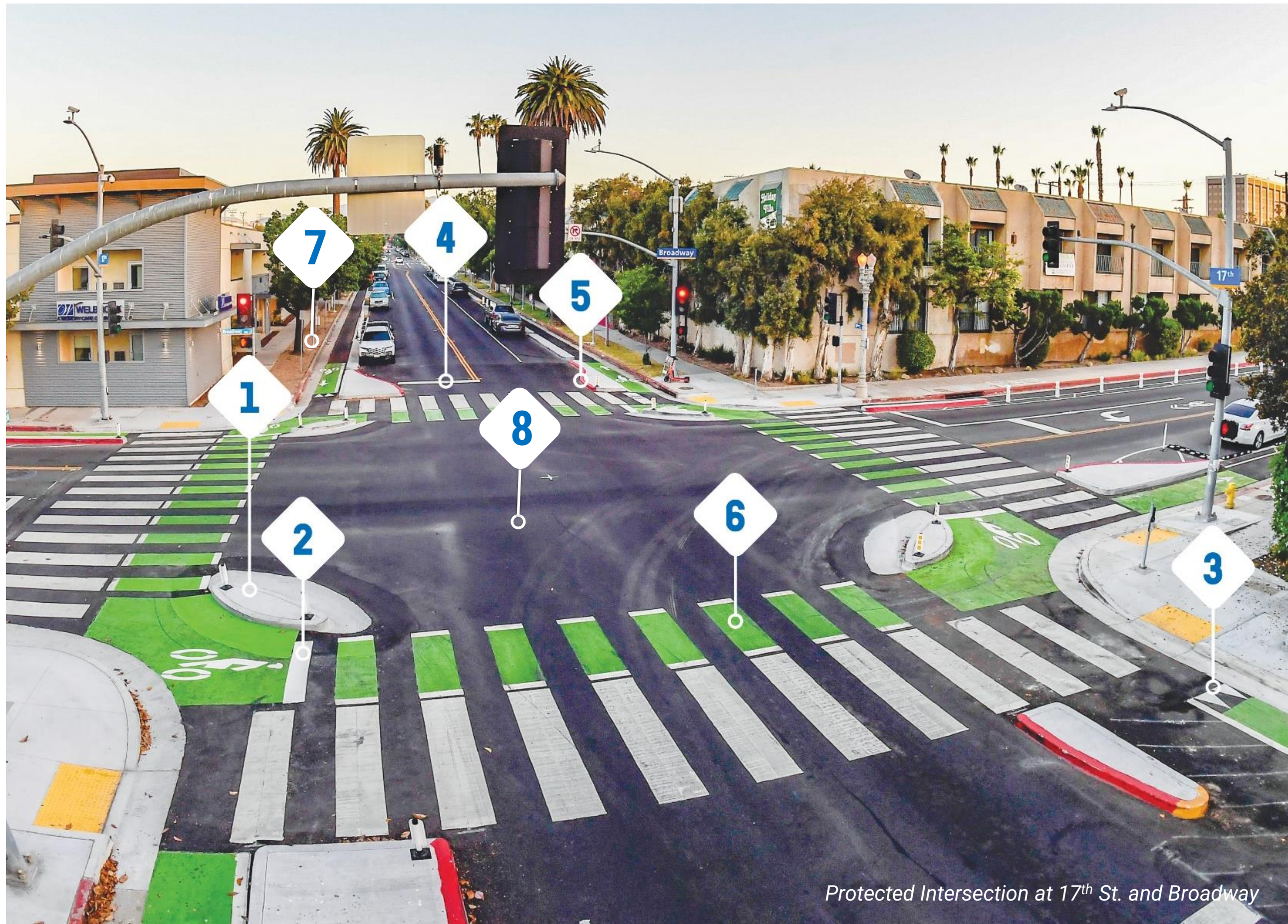


ENGAGING OUR COMMUNITY

Our community stakeholder's voices shape safer streets



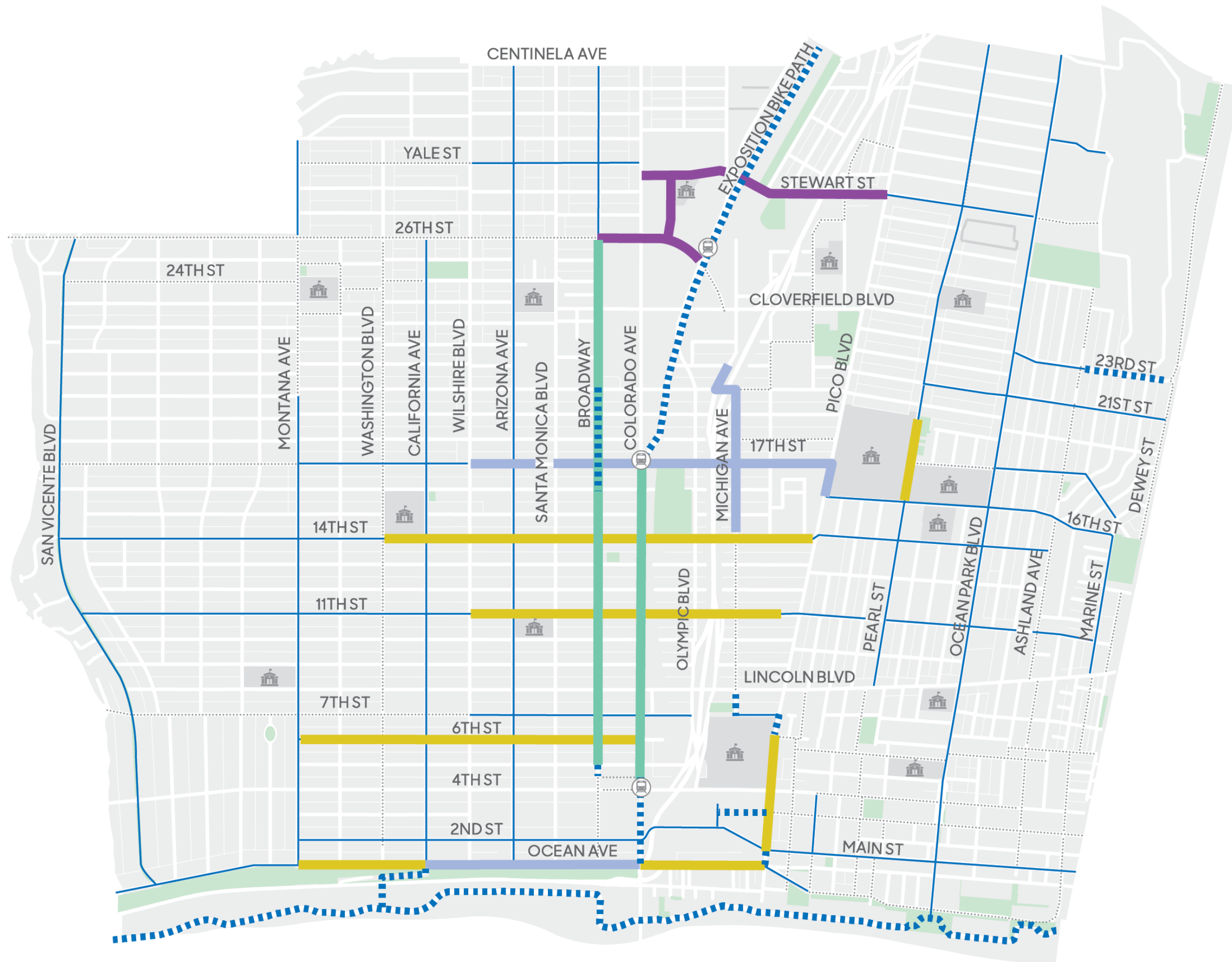
INTEGRATED PROJECT APPROACH



Protected Intersection at 17th St. and Broadway

1. Corner Islands
2. Forward Stop Bar
3. Yield Markings
4. Vehicle Stop Bar
5. Red Curb
6. Green Intersection Markings
7. Pedestrian Lighting
8. New Pavement

BAPA 5-Year Vision Progress - 2020



BAPA Five-Year Protected Bikeway Network Progress Map

BAPA 5-Year Vision Progress

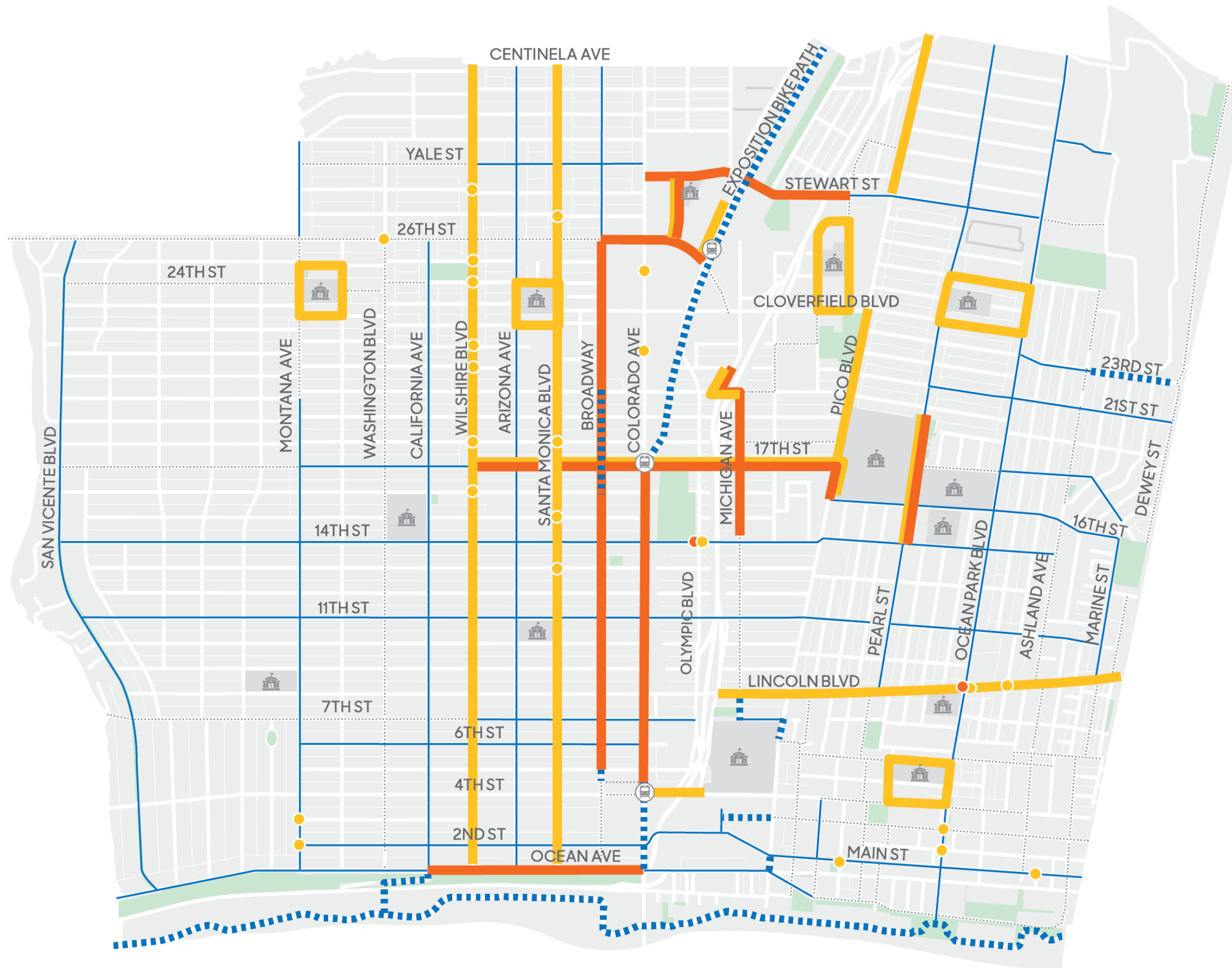
- In Construction/ Near Completion
- Bidding for Construction
- In Design
- Seeking Funding

Existing Bike Network

- Bike Lane
- Bike Route
- Protected Bikeway



BAP, PAP, LRSP PROJECTS UNDERWAY






Pedestrian and Bicycle Safety Improvement Projects Currently Underway

Current Projects Underway

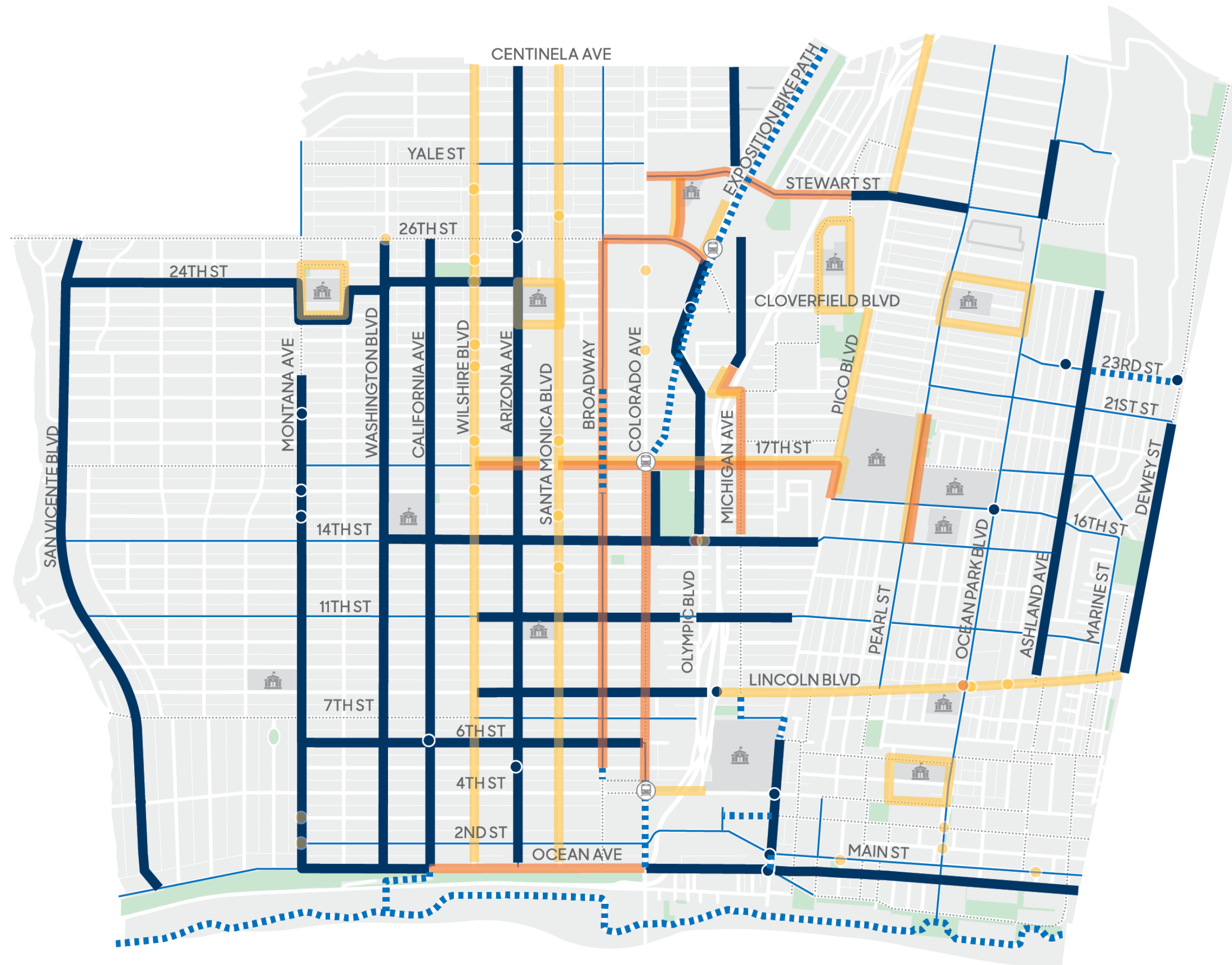
-  Pedestrian Projects Underway (Funded, In Design, In Construction)
-  Bicycle Projects Underway (Funded, In Design, In Construction)

Existing Bike Network

-  Bike Lane
-  Bike Route
-  Protected Bikeway



REMAINING UNFUNDED-UNPROGRAMMED PROJECTS



Remaining Unfunded Pedestrian and Bicycle Safety Improvement Projects

Current Projects Underway

- Pedestrian Projects Underway (Funded, In Design, In Construction)
- Bicycle Projects Underway (Funded, In Design, In Construction)
- Unfunded/Unprogrammed Projects (Network Gaps)

Existing Bike Network

- Bike Lane
- Bike Route
- Protected Bikeway



0 0.25 0.5
Miles

NORTH BEACH TRAIL IMPROVEMENT PROJECT

STATUS: COMPLETE – MARCH 2020

Expanded the beach trail north of the Bay Street to the northern city limit:

- Widened bike path
- Separate pedestrian path
- New paving
- New lighting and seating through out
- Decorative concrete murals



Decorative concrete on the North Beach Trail

4 SCHOOLS PEDESTRIAN SAFETY IMPROVEMENTS

STATUS: COMPLETE – NOVEMBER 2021

Pedestrian Improvements around John Adams and Lincoln Middle Schools, and Roosevelt and Will Rogers Elementary Schools that include:

- Curb Extensions: 23
- Flashing Beacon: 1
- Signing and Striping Improvements
- Traffic calming measures



Intersection of 14th St. and California Ave

23rd STREET PROTECTED BIKEWAY

STATUS: COMPLETE – DECEMBER 2021

23rd Street from Ashland Avenue to southern city limit.

- Protected bike lanes: 0.3 miles
- Signing and Striping improvements.



Protected bike lane Northbound 23rd St. at Pier Ave.

PICO-SMC PEDESTRIAN SAFETY IMPROVEMENTS

STATUS: COMPLETE – JUNE 2023

Pedestrian Improvements at five intersections between 16th Street and Cloverfield Boulevard that include:

- Curb Extensions: 4
- ADA Curb Ramps: 15
- Protected Bike Lane: 1 block
- Flashing Beacon: 1
- Pedestrian Median Refuge: 1



Flashing Beacons and Pedestrian refuge on Pico Ave at 22nd St.

SAFE STREETS FOR 17th STREET AND MICHIGAN AVE

STATUS: 98% COMPLETE

Bicycle and Pedestrian Safety Improvements on 17th Street from Wilshire Blvd to Pico, and Michigan from 14th to 19th Streets that include:

- Protected bikeway: 1.1 miles
- Pedestrian Scale Lighting
- Curb Extensions: 15
- Protected Intersections: 2
- ADA curb ramps: 46
- Mini traffic circles: 2
- Enhanced signing and striping



Cyclists in protected bike lane on 17th St.

OCEAN AVE PROTECTED BIKEWAY

STATUS: 98% COMPLETE

Ocean Avenue from Marguerita Avenue Incline to Colorado Avenue that include:

- Protected two-way cycletrack: 0.6 miles
- Protected Intersection: 1
- Crosswalk/ signing and striping improvements
- Net parking gain: ~75 spaces



Concrete extruder pouring concrete median for the Ocean Ave two-way cycle track

WILSHIRE BLVD SAFETY IMPROVEMENTS PHASE 1

STATUS: 90% COMPLETE

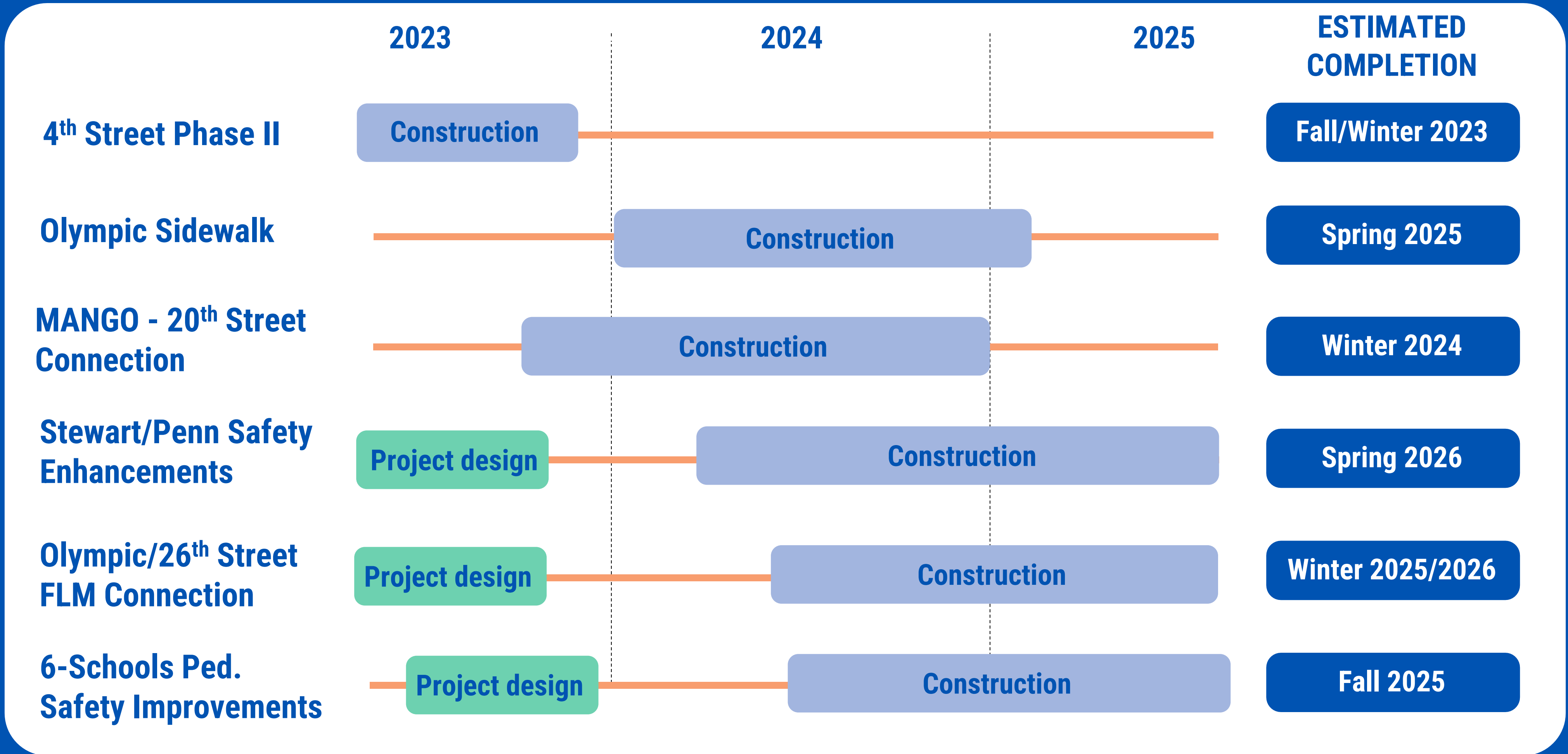
Safety improvements on Wilshire Boulevard from Ocean Avenue to eastern city limit that include:

- Right-Turn-Only restrictions at unsignalized intersections: 14
- Flashing Beacons: 5
- Bus Stop Improvements: 8 stops
- Paint and Post Curb Extensions: 15 intersections
- Paint and Post Median Refuge: 3
- Enhanced signing and striping

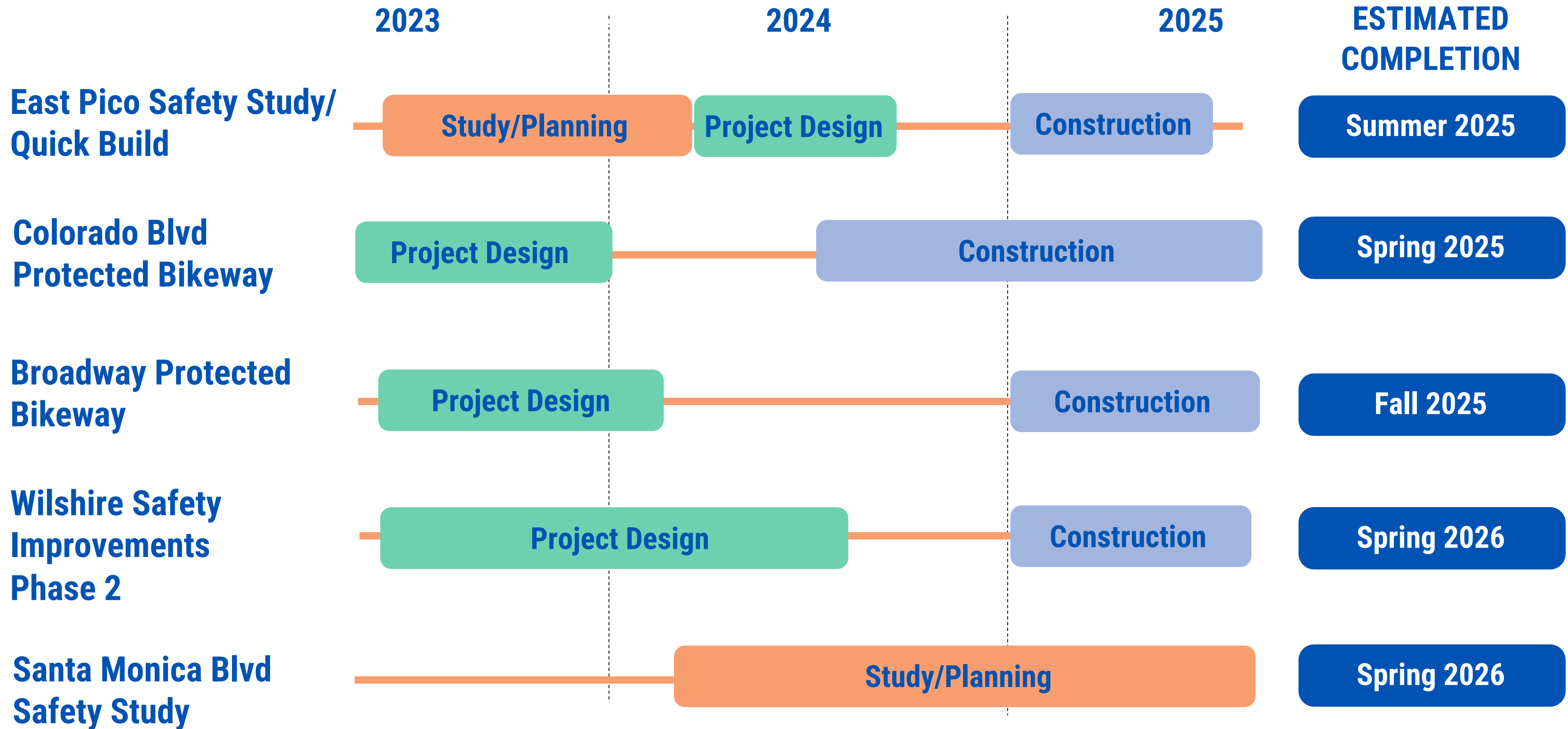


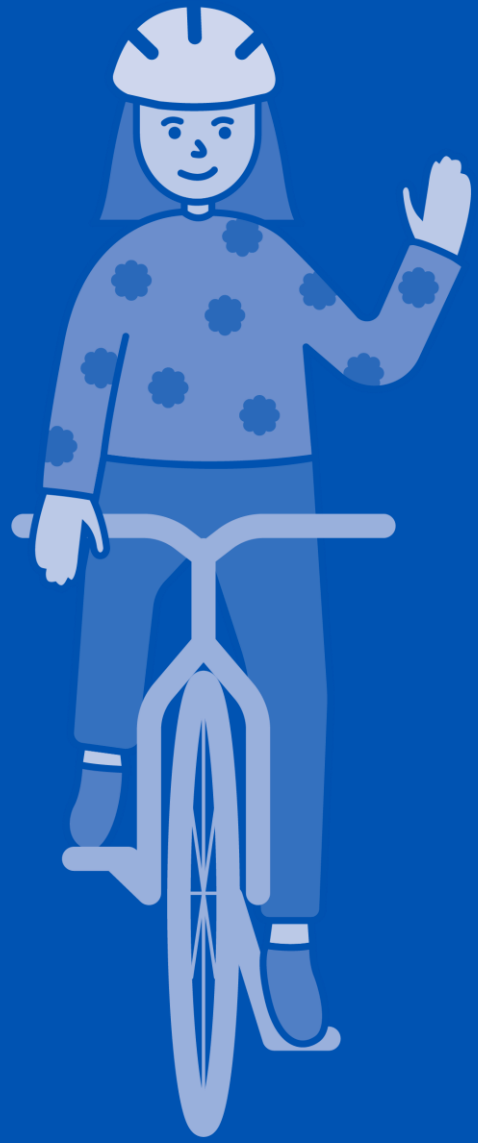
Wilshire Blvd. at 5th St.

CITY-WIDE PROJECTS UNDERWAY



CITY-WIDE PROJECTS UNDERWAY





NEXT STEPS



NEXT STEPS

- 1. Continue toward completing funded projects currently underway.**
- 2. Identify funding sources for next round for unfunded projects.**
- 3. Prepare grant applications as staff capacity allows.**
- 4. Educate and promote projects/progress with the community.**



Intersection of California Ave and Ocean Ave

UPCOMING OUTREACH AND ENGAGEMENT

BAPA, PAP, LRSP Update

Planning Commission – 9/20/2023

Sustainability Commission – 10/16/2023

Disabilities Commission – 11/6/2023

Internal City Departments – Various Dates Fall 2023

East Pico Safety Study

Community Walk Audit – Anticipated 10/7/2023

Community Touch Points – Dates TBD Fall 2023

Digital Map feedback – Fall/Winter 2023

Broadway Protected Bikeway

Corridor Door Knocking – Fall 2023

Neighborhood Associations Presentations – Fall 2023

UPCOMING OUTREACH AND ENGAGEMENT

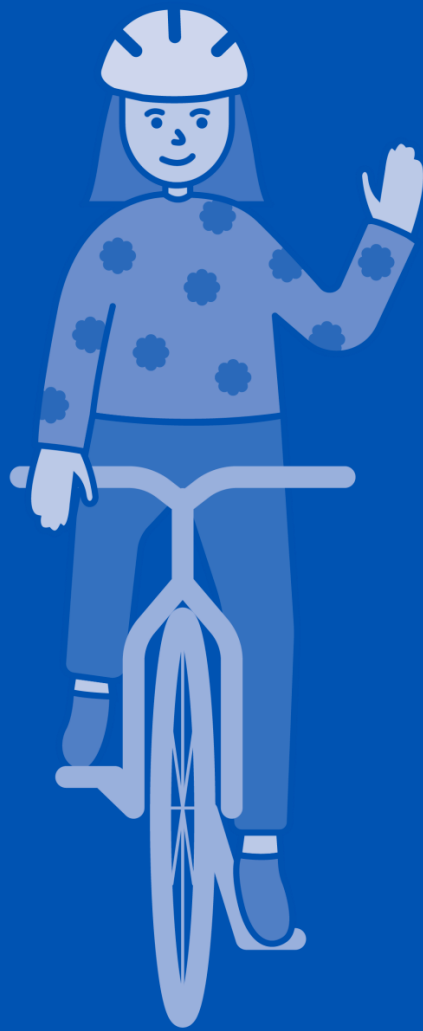
**6-Schools Pedestrian
Improvements**

SMMUSD/ School Principal Engagement – Fall 2023

17th Street Safety Enhancements

Ribbon Cutting Celebration – Anticipated 12/2/23

Questions



**Sign up for the
City of Santa Monica
Take the Friendly Road
Newsletter**



CalEnviroScreen 4.0

Overall Percentile

CalEnviroScreen 4.0 Results

